

# □ TECHNICAL BULLETIN

□ 18/12/15 - UPDATED 23/12/19

□ TB EM 15/05b

□ HIGH ENGINE OIL CONSUMPTION POST PISTON RING C/M

MODEL	SECTION
J11, C13 & F15 - HRA2DDT ENGINES ONLY	EM

## CONCERN

Customers may complain about MIL light on, hesitations, lack of power or that the engine oil level is reducing, which also can be accompanied by a rattle or tapping noise from the engine. This concern has been identified on HRA2DDT engine that is fitted in J11, F15 and C13 models.

## BACKGROUND

Under certain driving conditions the intake valves start to coke and / or the oil consumption on the HRA2DDT engine may increase significantly, causing the oil level in the engine to be reduced. The resultant low oil level may also cause the Chain Tensioner to be starved of oil, causing failure of the Chain Tensioner and an associate rattle noise from the Timing Chain. This bulletin guides diagnosis to ensure that the repair carried out is appropriate to the symptoms exhibited by the vehicle.

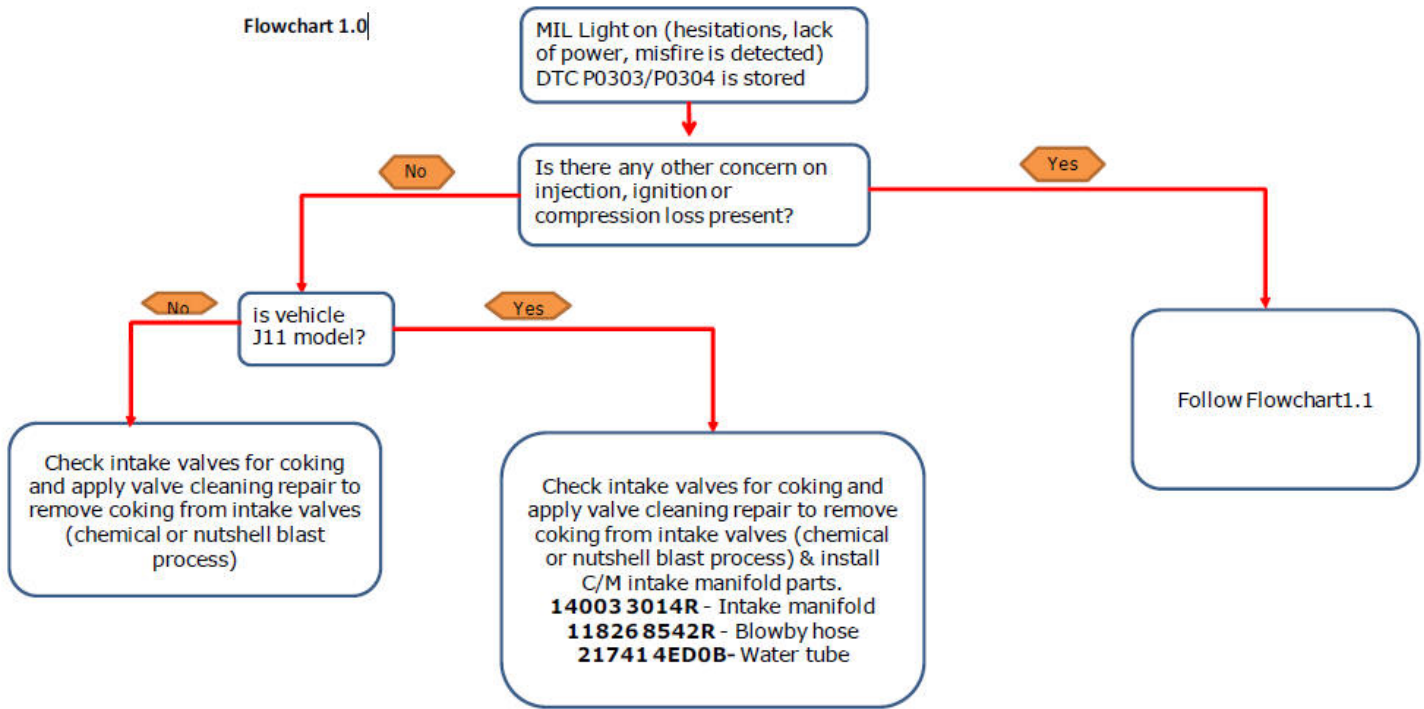
## AFFECTED VEHICLES

J11	
FROM	TO
SJN*E*J11U1924450	SJN*E*J11U2999999
C13	
FROM	TO
VSK*D*C13U0107014	VSK*D*C13U0999999
F15	
FROM	TO
SJN*E*F15U7310320	SJN*E*F15U7999997

If the customers vehicle is before the above VIN range but symptoms are similar to these described please follow [TB EM 15/05 High Engine Oil Consumption Pre Piston Ring C/M](#).

## FLOW CHART PROCEDURE

Flowchart 1.0



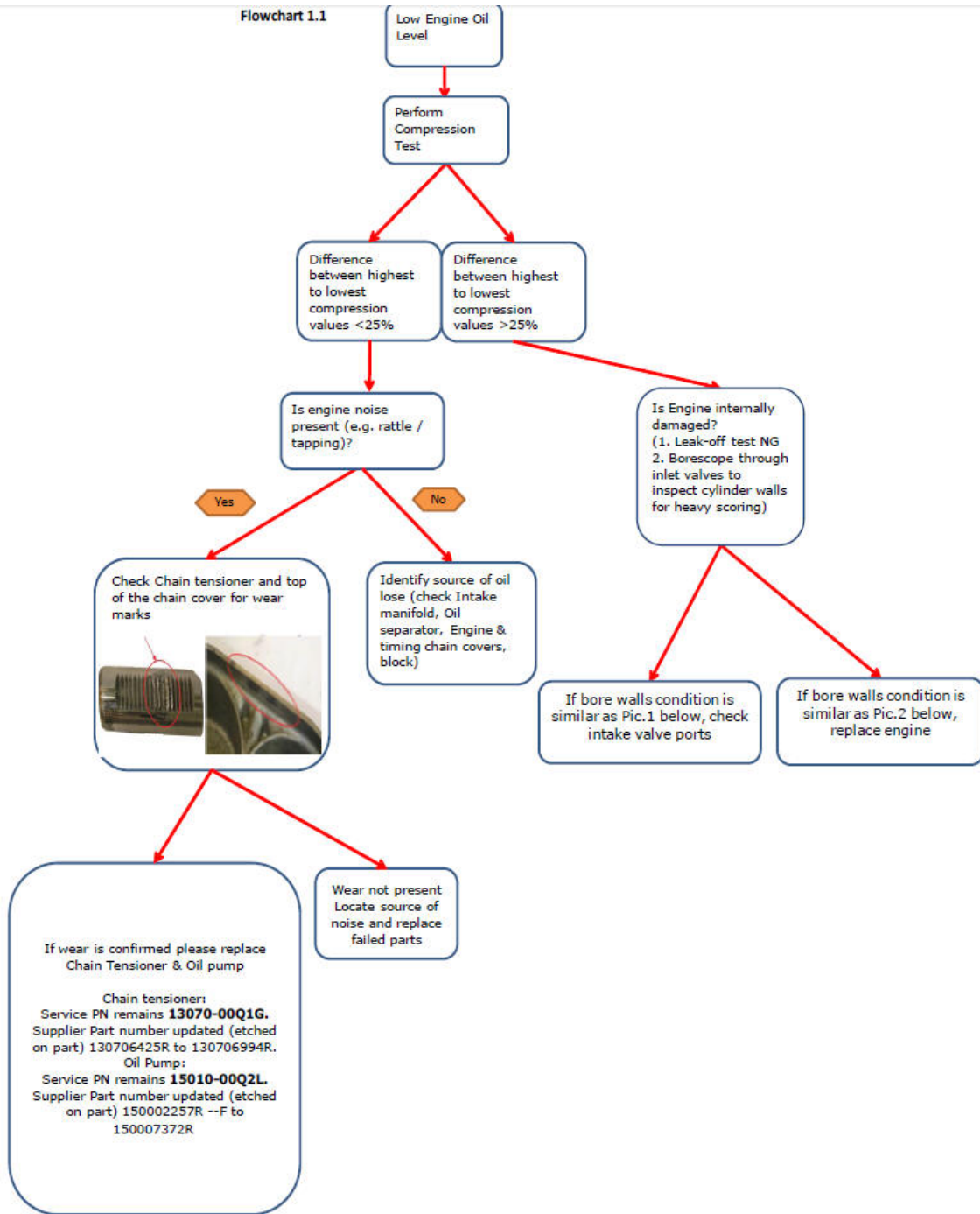
before

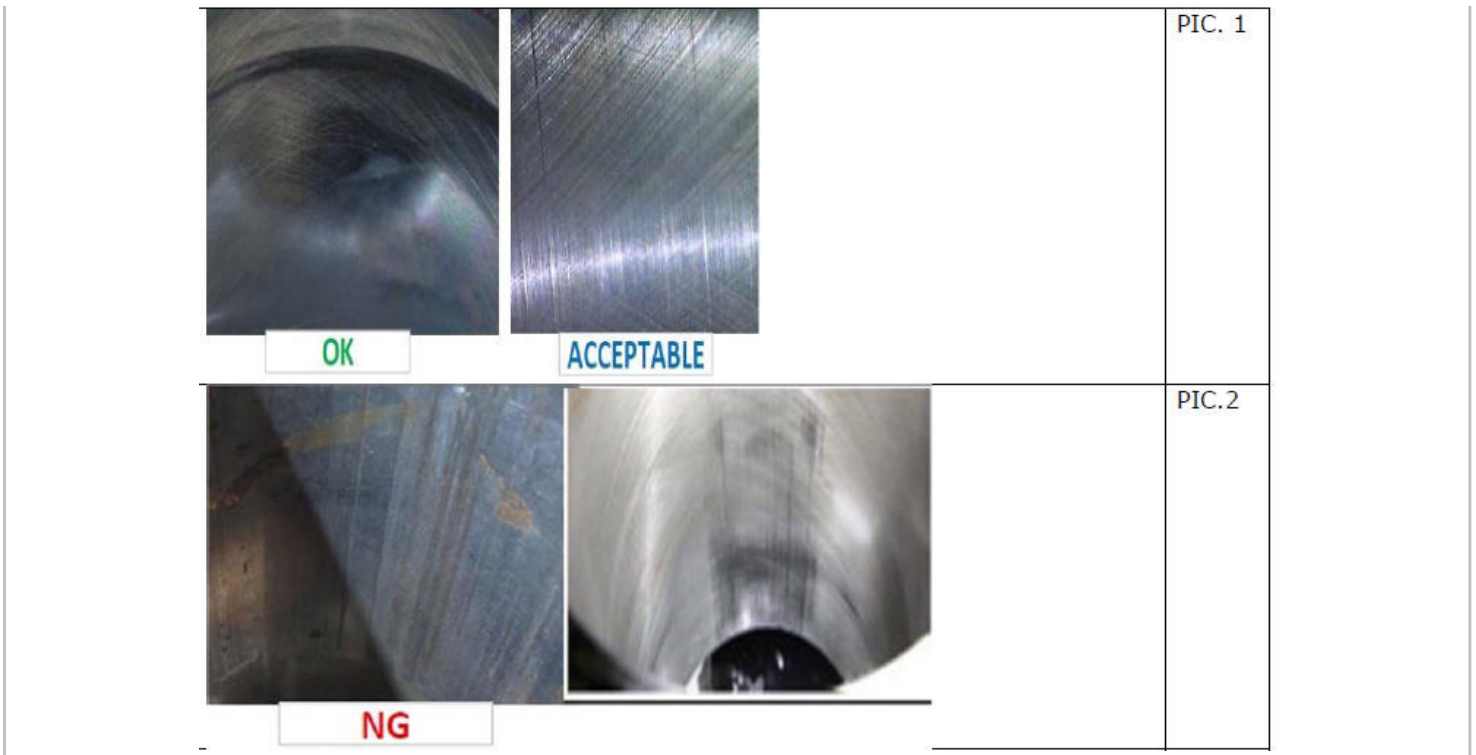


after



Flowchart 1.1





**WARRANTY INFORMATION**

NOTE: the claiming conditions below refer to vehicles within manufacturers warranty. For vehicles outside of this period, please refer to Goodwill Extension Bulletin [NDQ 1833](#)

It is imperative that EPC is used to obtain the correct bare engine part number when engine needs to be replaced.



SUBJECT	HIGH ENGINE OIL CONSUMPTION PRE PISTON RING C/M - TENSIONER & OIL PUMP REPLACEMENT		
AFFECTED MODEL	J11, C13 & F15		
WARRANTY CODES	PFP	13070 * (SELECT PFP AS PER WEBFAST)	GOODWILL EXTENSION GE002
	CS	ZL	ZZ
	CT	32	99
	CC	0	2
OPERATIONS	DESCRIPTION	CODE	
	J11 TENSIONER RP	AG12A4	GE0022
	C13 TENSIONER RP	AG12A1	GE0031
	F15 TENSIONER RP	AG12A5	GE0027

Additional parts 15010 00Q2L - oil pump.

SUBJECT	HIGH ENGINE OIL CONSUMPTION PRE PISTON RING C/M - BARE ENGINE DIAGNOSIS & REPLACEMENT		
AFFECTED MODEL	J11, C13 & F15		
WARRANTY CODES	PFP	A2033* (SELECT PFP AS PER WEBFAST)	GOODWILL EXTENSION GE002
	CS	ZL	ZZ
	CT	32	99

	CC	0	2
OPERATIONS	DESCRIPTION	CODE	
	J11 BARE ENGINE RP	AA20A4	GE0021
	C13 BARE ENGINE RP	AA20A1	GE0029
	F15 BARE ENGINE RP	AA20D5	GE0025

SUBJECT	HIGH ENGINE OIL CONSUMPTION PRE PISTON RING C/M - INTAKE VALVE CLEANING		
AFFECTED MODEL	J11, C13 & F15		
WARRANTY CODES		WARRANTY	GOODWILL EXTENSION
	PFP	13201* (SELECT PFP AS PER WEBFAST)	GE002
	CS	AC	ZZ
	CT	51	99
	CC	0	2
OPERATIONS	DESCRIPTION	CODE	
	J11 INTAKE MANIFOLD R&I	AR10A4	GE0020
	C13 INTAKE MANIFOLD R&I	AR10A1	GE0030
	F15 INTAKE MANIFOLD R&I	AR10A5	GE0026

Additional parts for J11 only - 14003 3014R intake manifold, 11826 8542R blowby hose & 21741 4ED0B water tube.